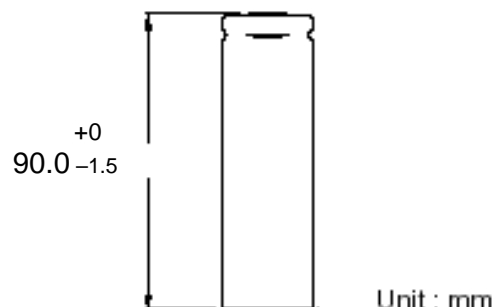
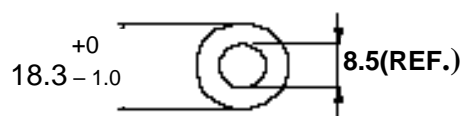


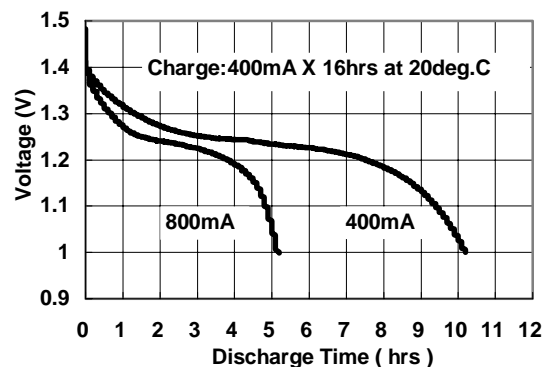
<b>Type</b>	: High Temperature Rechargeable Nickel Metal Hydride Cylindrical Cell
<b>Nominal Dimension (with Sleeve)</b>	: $\Phi = 18.3\text{mm}$ H = 90mm
<b>Applications</b>	: Long term standby use. Recommended discharge current: 400mA to 2000mA
<b>Nominal Voltage</b>	: 1.2V
<b>Capacity</b>	: Nominal: 4000mAh Minimum: 4000mAh Typical: 4200mAh When discharged at 800mA to 1.0V at 20°C
<b>Charging Condition</b>	: Standard mode: 400mA for 16 hrs at 20°C Standby Intermittent mode: 400mA for 16hrs at 20°C then maintenance with 400mA for 1min/10mins.
<b>Service Life</b>	: >350 cycles (IEC 61951-2) Designed for 10 years standby life, end of life capacity is 60% of nominal capacity at 40deg.C .
<b>Continuous Overcharge Weight</b>	: Comply with IEC61951-2 Permanent Charge Endurance Test : 76g
<b>Internal Resistance</b>	: Average 12m $\Omega$ upon fully charged (Range 9-15m $\Omega$ ) at 1000Hz
<b>Max. Charging Voltage</b>	: 1.5V at 400mA charging
<b>Ambient Temperature Range</b>	: Charge: 0 to 50°C Discharging: -20 to 70°C Storage: -20 to 35°C Storage (1 week): -20 to 60°C

### Model No.: GP400LALHT

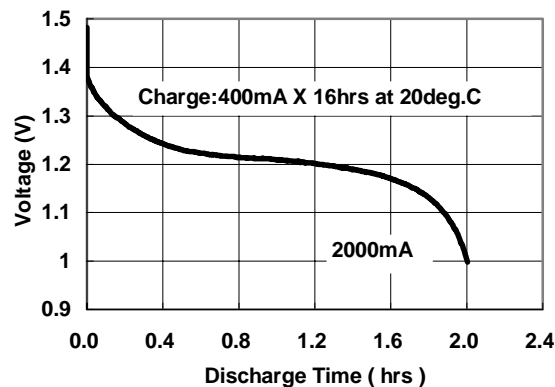


Unit : mm

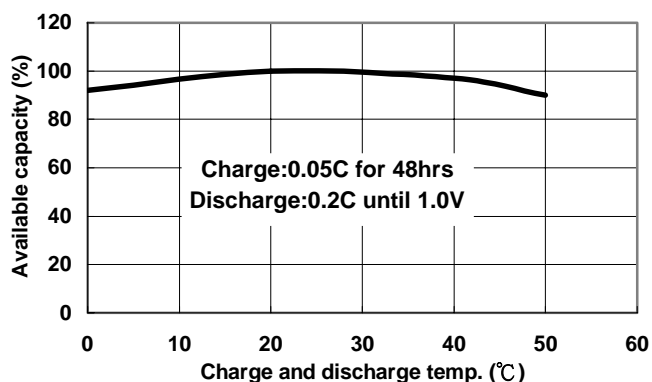
#### Low Rate Discharge



#### High Rate Discharge



#### Charge / Discharge efficiency Vs. temp.



The information (subject to change without prior notice) contained in this document is for reference only and should not be used as a basis for product guarantee or warranty. For applications other than those described here, please consult your nearest GP Sales and Marketing Office or Distributors.

PBR073-01 REV00