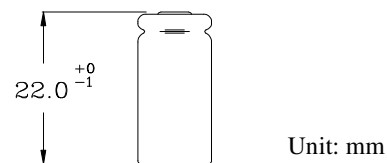
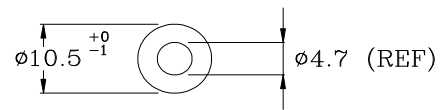


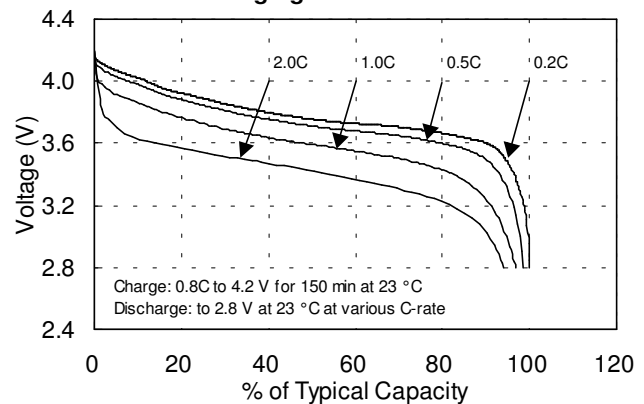
Type	: Rechargeable Lithium Ion Cylindrical Cell
Nominal Dimension (with Sleeve)	: $\Phi = 10.5 \text{ mm}^*$ H = 22.0 mm
Applications	: Recommended discharge current 14 to 280 mA
Nominal Voltage	: 3.7V
Capacity	: Typical: 140 mAh Minimum: 135 mAh When discharged at 28 mA to 2.8 V at 23 °C
Charge Condition Recommended	: 112 mA to 4.2 V for 2.5 hrs at 23 °C
Charging Condition in Applications	: 112 mA to 140 mA (0.8 to 1C) Charge termination control recommend control parameters: Taper current 0.05C at 4.2 V
Clamped Charging Voltage	: 4.2 V +/- 0.05 V
Service Life	: >500 cycles (70% of typical capacity)
Weight	: Approx. 4.2 g
Internal Resistance	: 180 m Ω max. at 1000Hz
Ambient Temperature Range	: Charging : 0 to 45 °C Discharging : -30 to 60 °C ** Storage (1 month) : -20 to 45 °C Storage (6 months) : -20 to 40 °C Storage (1 year) : -20 to 35 °C
Note	: * with plastic sleeve
Precaution	: ** 60 °C is only applied during 1C or lower discharging current

Model No.: **GP1022L14**

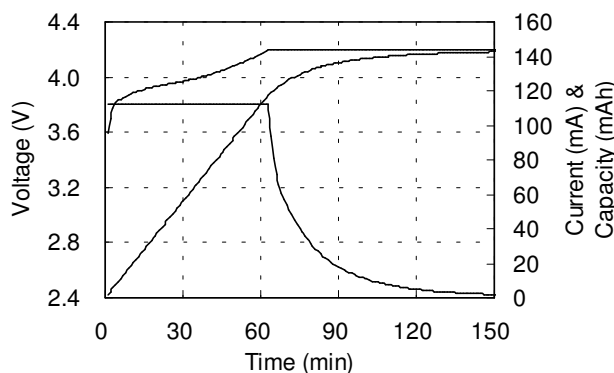


Unit: mm

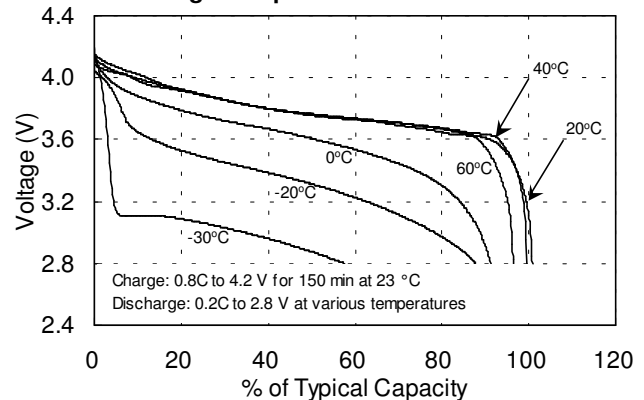
Discharging Characteristics



Charging Characteristics



Discharge Temperature Characteristics



The information (subject to change without prior notice) contained in this document is for reference only and should not be used as a basis for product guarantee or warranty. For applications other than those described here, please consult your nearest GP Sales and Marketing Office or Distributors.

For detail information, please refer to the relevant product specification.