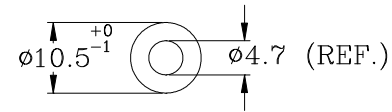
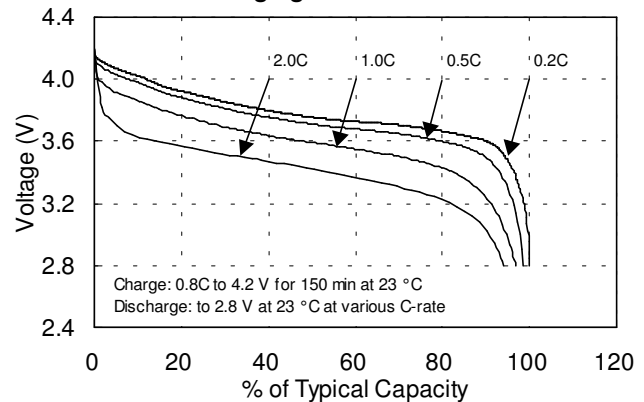


Type	: Rechargeable Lithium Ion Cylindrical Cell
Nominal Dimension (with Sleeve)	: $\Phi = 10.5 \text{ mm}^*$ H = 18.0 mm
Applications	: Recommended discharge current 11 to 210 mA
Nominal Voltage	: 3.7V
Capacity	: Typical: 105 mAh Minimum: 100 mAh When discharged at 21 mA to 2.8 V at 23 °C
Charge Condition Recommended	: 84 mA to 4.2 V for 2.5 hrs at 23 °C
Charging Condition in Applications	: 84 mA to 105 mA (0.8 to 1C) Charge termination control recommend control parameters: Taper current 0.05C at 4.2 V
Clamped Charging Voltage	: 4.2 V +/- 0.05 V
Service Life	: >500 cycles (70% of typical capacity)
Weight	: Approx. 3.5 g
Internal Resistance	: 220 m Ω max. at 1000Hz
Ambient Temperature Range	: Charging : 0 to 45 °C Discharging : -30 to 60 °C ** Storage (1 month) : -20 to 45 °C Storage (6 months) : -20 to 40 °C Storage (1 year) : -20 to 35 °C
Note	: * with plastic sleeve
Precaution	: ** 60 °C is only applied during 1C or lower discharging current

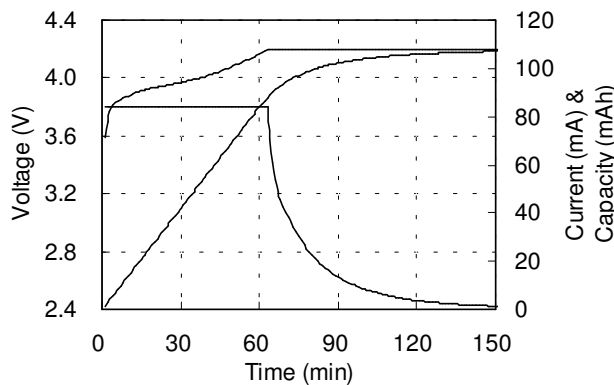
Model No.: **GP1018L10**



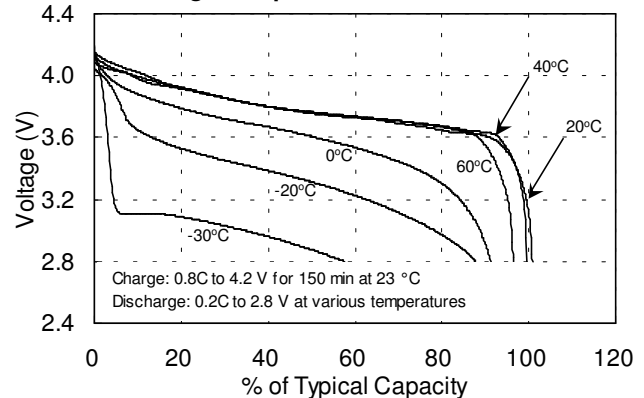
Discharging Characteristics



Charging Characteristics



Discharge Temperature Characteristics



The information (subject to change without prior notice) contained in this document is for reference only and should not be used as a basis for product guarantee or warranty. For applications other than those described here, please consult your nearest GP Sales and Marketing Office or Distributors.

For detail information, please refer to the relevant product specification.